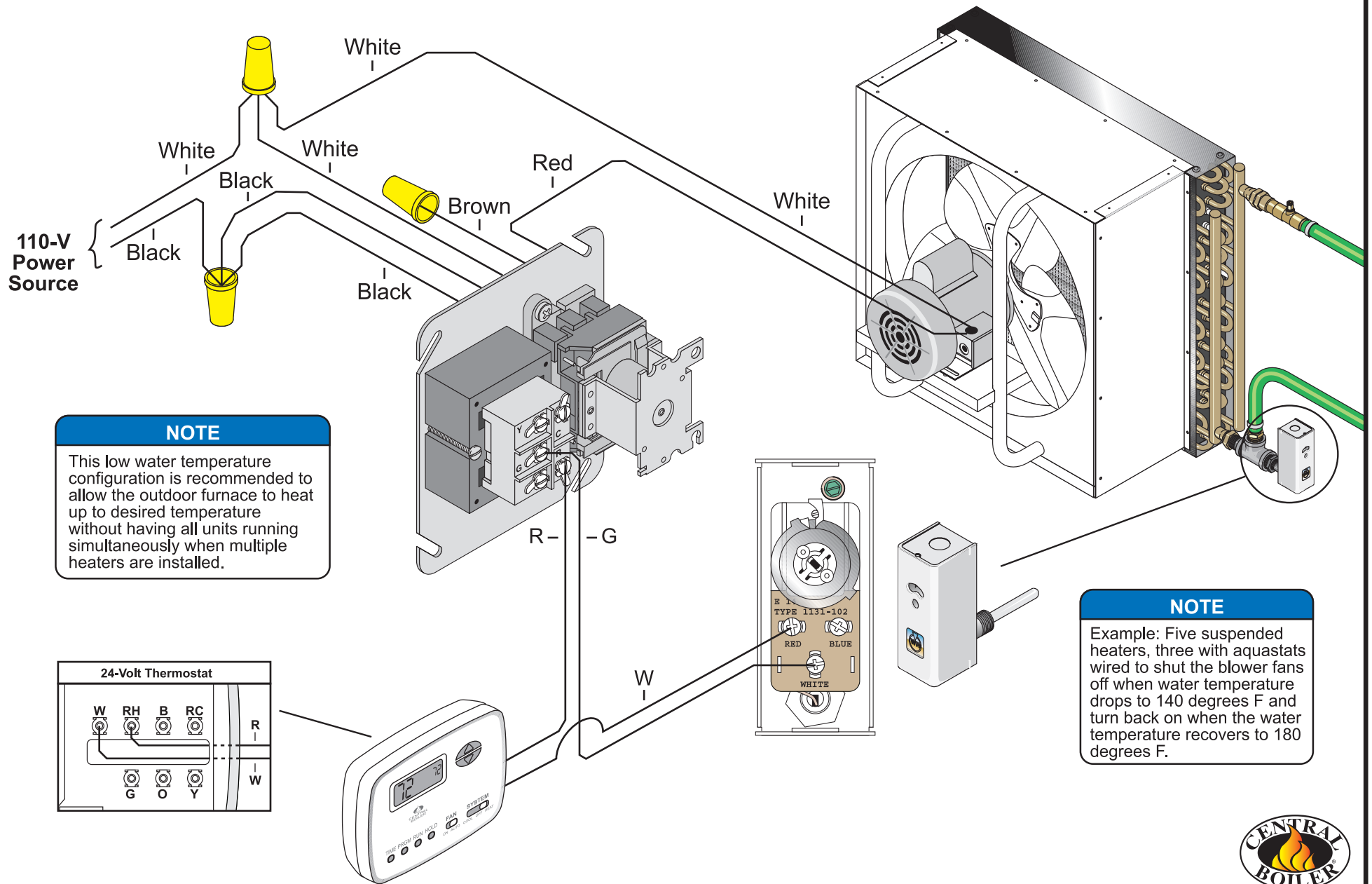
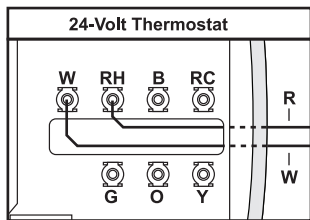


# Wire Diagram with Aquastat / Heat Exchanger



**NOTE**  
 This low water temperature configuration is recommended to allow the outdoor furnace to heat up to desired temperature without having all units running simultaneously when multiple heaters are installed.



**NOTE**  
 Example: Five suspended heaters, three with aquastats wired to shut the blower fans off when water temperature drops to 140 degrees F and turn back on when the water temperature recovers to 180 degrees F.

